



Customize Clear Pathways for EVERY Student Using Online Career & Education Plans

Dr. Lauren Wintermeyer & Jesus Vega, M.A., Ed.D. candidate

Educating for Careers

March 3, 2014

Get Stay Focused!TM



Presentation Overview

- Background of *Get Focused...Stay Focused!*TM
- GFSF Progression in Education Model & Curriculum Modules for Grades 10 – 12
- GFSF Implementation & Online 10-year Plan
- K-12 Administrator Perspective & Partnerships
- GFSF & Common Core Implementation
- Strategic Planning
- Q & A



Which Comes First???

MAJOR ? ??

? ????? CAREER

COLLEGE ?





Note: This chart describes the completion rate – the percentage that graduates of a particular cohort of students. The attainment rate, most frequently cited in international comparisons, reflects the percentage of the population with an associate degree or higher.

100 students start 9th grade



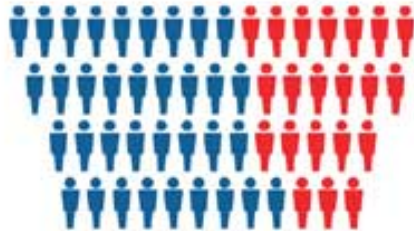
75 graduate high school



51% on

"college prep" track

56 enter college



38% need remediation

33 graduate college



U.S. Department of Education, various studies and reports

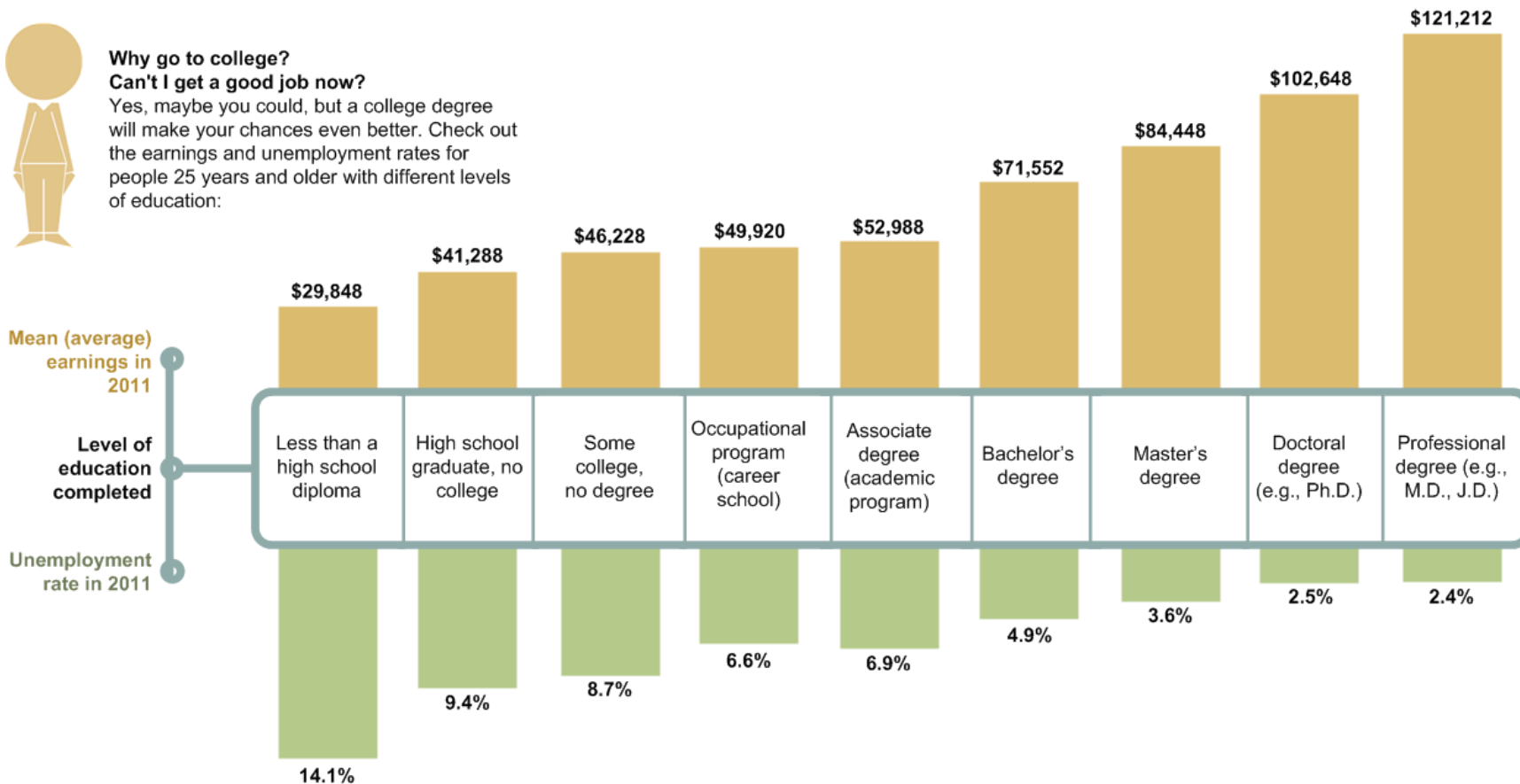


Kanter, M. (May - June 2011). American higher education: "First in the world". *Change: The magazine of higher learning*. <http://www.changemag.org/Archives/Back%20Issues/2011/May-June%202011/first-in-the-world-full.html>



**Why go to college?
Can't I get a good job now?**

Yes, maybe you could, but a college degree will make your chances even better. Check out the earnings and unemployment rates for people 25 years and older with different levels of education:



Source: Bureau of Labor Statistics, Current Population Survey, unpublished tables, 2012.



Dropout & Remediation Statistics

- National high school dropout is 30%
- College dropout rate is nearly 50%
- 25% of students entering 4-year universities and 61% of students entering community colleges enrolled in at least one remedial course (U.S. Department of Education)
- Only 17% of students who take remedial reading will complete a bachelor's degree (Wirt et al., 2004)



- **Points to Ponder:**

- 1. Are we succeeding as a system???**
- 2. Is the status-quo model of education sufficient for today's economy and labor market?**
- 3. What is the long-term impact on our students?**



Factors Impacting Dropout Rates

- Contributing factors to dropout
 - Lack of focus and intrinsic motivation
 - Need for remediation and delayed progress
 - Familial and societal issues
 - Socioeconomic issues



Strategies to Remedy Dropout

- High School:
 - AVID
 - Linked Learning
 - Continuation Schools
 - Tutoring Programs
 - Upward Bound
 - Algebra Academies
 - Summer School
 - Early College
- Post-Secondary:
 - Basic Skills/Remediation
 - Learning Communities
 - Counseling
 - Student Support Services
 - Extended Opportunity Programs & Services
 - Cal-Works
 - Transitions Program
 - Transfer Achievement Program



Improving Accountability Outcome Measures

- High School:
 - AYP/API (California)
 - Standardized Test Scores
 - Graduation Rates
 - College-going Rates
 - Student Progress and Achievement – Closing the “Achievement Gap”
- College:
 - Reducing the need for Remediation
 - Increase Course Success Rates
 - Persistence Rates
 - Transfer Rates
 - Degree/Certificate Completion



- **Point to Ponder:**

What if there was a program, that reached ALL students, designed to increase intrinsic motivation???



Kelly Green Activity





Background of Implementation:

- Irvine Grant and the Concurrent Courses Initiative
- Course alignment with PRO 138d (Personal Planning)
- 3-unit pass/no-pass elective course
- 2009-10: Pilot year with CHS, DPHS, and La Cuesta
- Spring 2010: College credit awarded to 181 students
- Fall 2013: College credit awarded to 582 students
- **To date: Over 3,000 local (South Santa Barbara County) students have dually enrolled for PRO 138d SBCC credit**



Dual Enrollment Outcome Data:

- Former dual enrollment students* who matriculate to SBCC:
 - Are more likely to enroll full-time in college (67% compared to 54%)
 - Require less remediation and placed at the college transfer level course at a higher rate than their direct entry peers (Math: 26.4% compared to 18%; Reading: 25.9% compared to 9.9%; Writing: 34.8% compared to 14.6%)
 - Note: Former Dual Enrollment students who participated in courses at both their high school and on the college campus scored at the college level at the highest rate: Math: 43%, Reading: 36%, and Writing: 50%
 - Earn a higher average cumulative GPA (after three academic years , 2.47 vs. 2.02)
 - Earn more transferable college units (after three years, 43 vs. 29)
- *Note: Sample was comprised of 764 first-time college students who graduated from a local service-area high school in spring 2008 and matriculated to SBCC in fall 2008



SBCC GFSF

Progression in Education

Model (PEM):

A Comprehensive Approach for

Assuring Post-Secondary

Success for EVERY student




Agriculture &
Natural Resources


Arts, Media &
Entertainment


Building Trades &
Construction

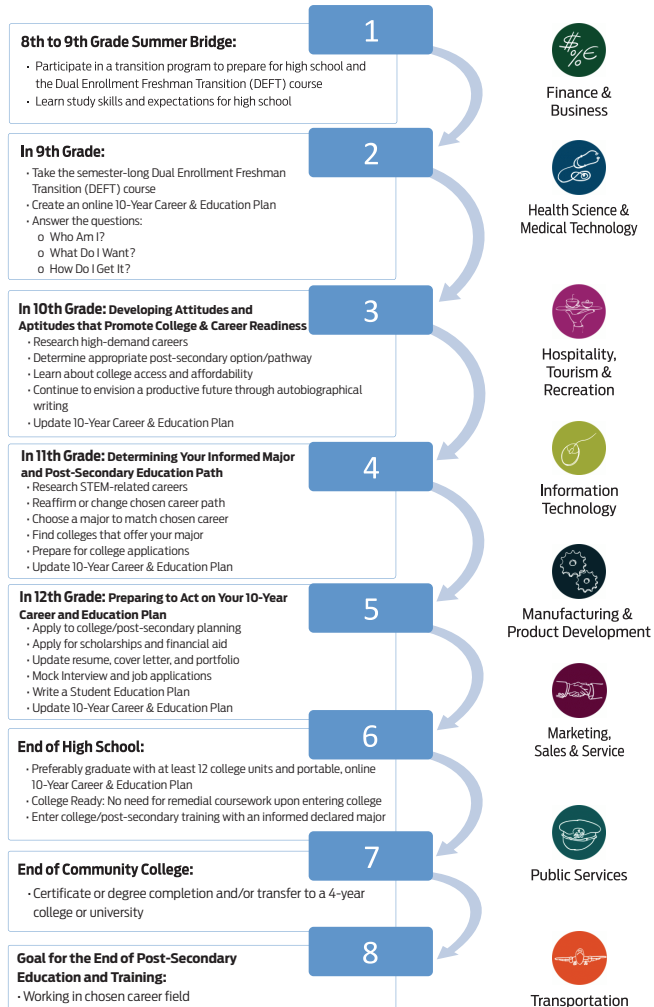

Education,
Child Development
& Family Services


Energy & Utilities


Engineering
& Design


Fashion &
Interior Design

Get Focused...Stay Focused!™ Progression in Education Model (PEM)





- What is PEM?
 - Begins with 8th grade Bridge program
 - DEFT course in 9th grade with creation of 10-Year-Plan
 - 16-lesson follow-up units in 10th, 11th, & 12th grades, tied to English Common Core, revisit 10-Year-Plan
 - Enter college with *FOCUS*, a 10-Year Career & Education Plan, and an informed, declared major
 - Continue in college on a *FOCUSED* educational track and complete on time
 - If basic skills are needed, complete them in an accelerated time frame



Current Collaboration & Status of Implementation:

- Freshman Seminar course is in place at all four local comprehensive high schools. The 10-year Plan is a graduation requirement for freshmen who entered SBUSD in fall 2013.
- Follow-up curriculum for grades 10-12 provides a “touch-point” for students to continue developing college and career readiness skills and to update their online 10-year Plan. Implementation of 10th grade module begins in 2013-14 year.
- **Current collaboration with Allan Hancock College and North Santa Barbara County Secondary Schools to expand Initiative county-wide.**



GFSF is Aligned with:

- K-12 Common Core Standards
- Santa Barbara County THRIVE – Cradle to Career Initiative
- SBCC Express to Success (Acceleration Model) and various Transfer Programs
- Student Success Act of 2012 (SB 1456)
- CTE Initiatives/SB 70/1070 Funding & “Doing What Matters”
- President Obama’s challenge: “America cannot lead in the 21st century unless we have the best educated, most competitive workforce in the world.” President Barack Obama, Remarks on



9th Grade Curriculum: *Career Choices*

Who am I? What do I want? How do I get it?

- Personal development, exploration of strengths and interests
- Research three career pathways of interest
- Budget building/financial literacy development
- Career Technical Education information
- College planning information
- Creation of online 10-year Career & Education Plan



Utilizing the 10-year Plan

- How Student can use 10-year Plan
 - Self-articulate Career & Educational Goals
 - Check on progression toward goals
 - Provide as a framework when meeting with counselors
- How Teachers/Counselors can use 10-year Plan
 - Identify students' goals and monitor student progress
 - Engage learners and frontload important concepts for career and education planning/development
 - Guide students toward appropriate resources
- How College can use 10-year Plan
 - Guide to advising for new students
 - Support students on self-identified path



Reducing the Need for Remediation



Do you *really* want to pay for
**HIGH SCHOOL-LEVEL
 CLASSES** *when you get to*
COLLEGE?

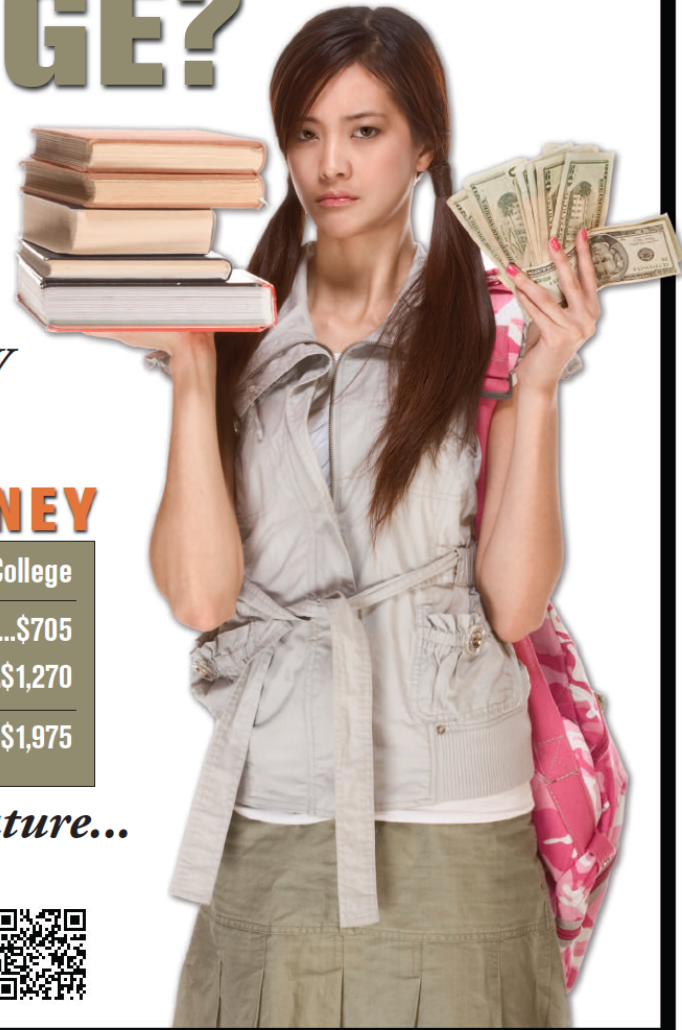
*Your effort and
 achievement NOW
 will save you*

TIME and MONEY

Class	High School	College
English	\$0	\$705
Math	\$0	\$1,270
Total Cost	\$0	\$1,975

(Costs are approximate)

in the future...



SBCC Dual Enrollment
www.sbcc.edu/dualenrollment
 (805) 730-3020





Let's Break it Down...

Study NOW! In order to enroll in SBCC English or Math courses, you must take the required English or Math assessment test. Visit the Assessment Center website to plan for your assessment:

www.sbcc.edu/assessmentcenter

Below is the schedule of classes you would have to take if you are not academically prepared for college-level coursework.

Ways to prepare for SBCC in order to save money and time:

- Take the Early Assessment Program in English and math during your junior year—it's on the California Standards Tests (CST)—to see if you are academically prepared for college-level courses
- Take advantage of Advanced Placement (AP), International Baccalaureate (IB), A-G (College Preparatory), and/or Dual Enrollment classes offered on your high school campus, SBCC, and/or online
- Revisit and update your online 10-year Career & Education Plan

English in High School:

- Develop your reading, writing and research skills throughout high school

- Read & write recreationally

Math in High School:

- Take four years of math in high school
- Take and pass Algebra I and/or Algebra II with a grade of "B" or better
- Seek out help when needed from teachers, tutors and/or peers

English at SBCC

Course Title	Time Required per Semester	\$ for Class (subject to change)	\$ for Books (approximate)
English 65 (4.5 units) Basic Skills: Writing	72 hours lecture 144 hours homework	\$207	\$6
English 80 (4.5 units) Effective Writing Techniques	72 hours lecture 144 hours homework	\$207	\$67
English 100 (3 units) Fundamentals of Composition	48 hours lecture 96 hours homework	\$138	\$80

Total after three non college-level courses:

192 hours of lecture, **384 hours** of homework, **\$705** for classes and books

Now you can take college transfer-level English

Math at SBCC

Course Title	Time Required per Semester	\$ for Class (subject to change)	\$ for Books (approximate)
Math 1 (3 units) Basic Mathematics	48 hours lecture 96 hours homework	\$138	\$95
Math 4 (3 units) Pre-Algebra	48 hours lecture 96 hours homework	\$138	\$160
Math 100 (5 units) Elementary Algebra	80 hours lecture 160 hours homework	\$230	\$180
Math 107 (4 units) Intermediate Algebra	64 hours lecture 128 hours homework	\$184	\$145

Total after three non college-level courses:

240 hours of lecture, **480 hours** of homework, **\$1,270** for classes and books

Now you can take college transfer-level Math



Stay **Focused!**™
Get





10th Grade Curriculum: Developing Attitudes and Aptitudes that Promote College & Career Readiness

- Research high-demand careers
- Determine appropriate post-secondary option/pathway
- Learn about college access and affordability
- Update 10-year Plan



11th Grade Curriculum: Determining Your Informed Major & Post-Secondary Education Path

- Research STEM-related careers
- Reaffirm or change chosen career path
- Choose a major to match chosen career
- Find colleges that offer your major
- Prepare for college applications
- Update 10-year Plan



12th Grade Curriculum: Preparing to Act on Your 10-Year Education & Career Plan

- Apply to college/post-secondary planning
- Apply for scholarships & financial aid
- Update resume, cover letter, and portfolio
- Mock Interview & job applications
- Write a Student Education Plan
- Update 10-year Plan



Leadership

- Executive Planning Committee
 - Members from various institutions
 - Quarterly meetings
- District Leadership Teams
 - District and site-based administrators
 - Quarterly meetings
- School Site-based Implementation Teams
 - Administrative leaders, counselors, multiple grade-level teachers
 - Site-specified meeting & training schedule



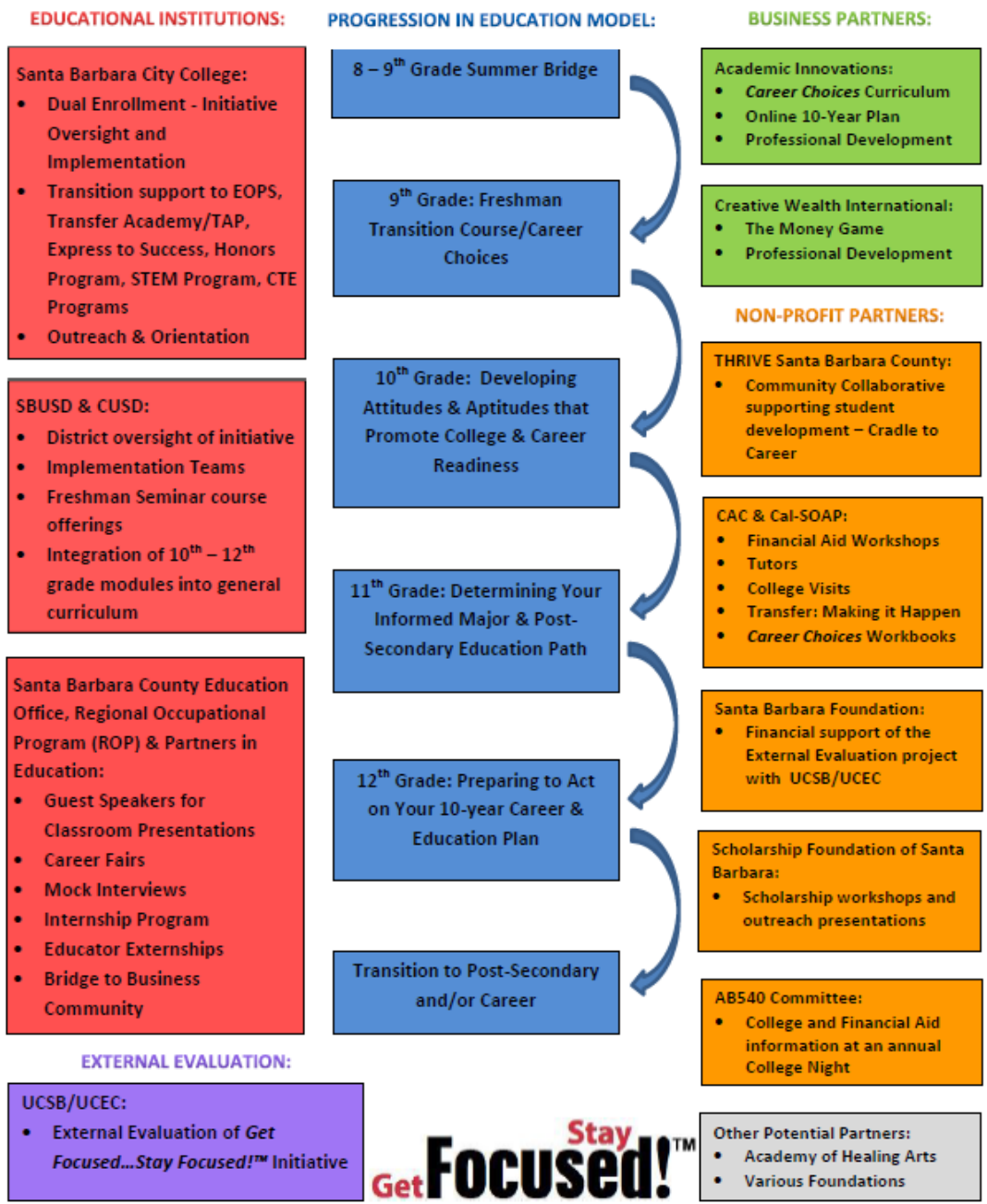
K-12 Partnership:

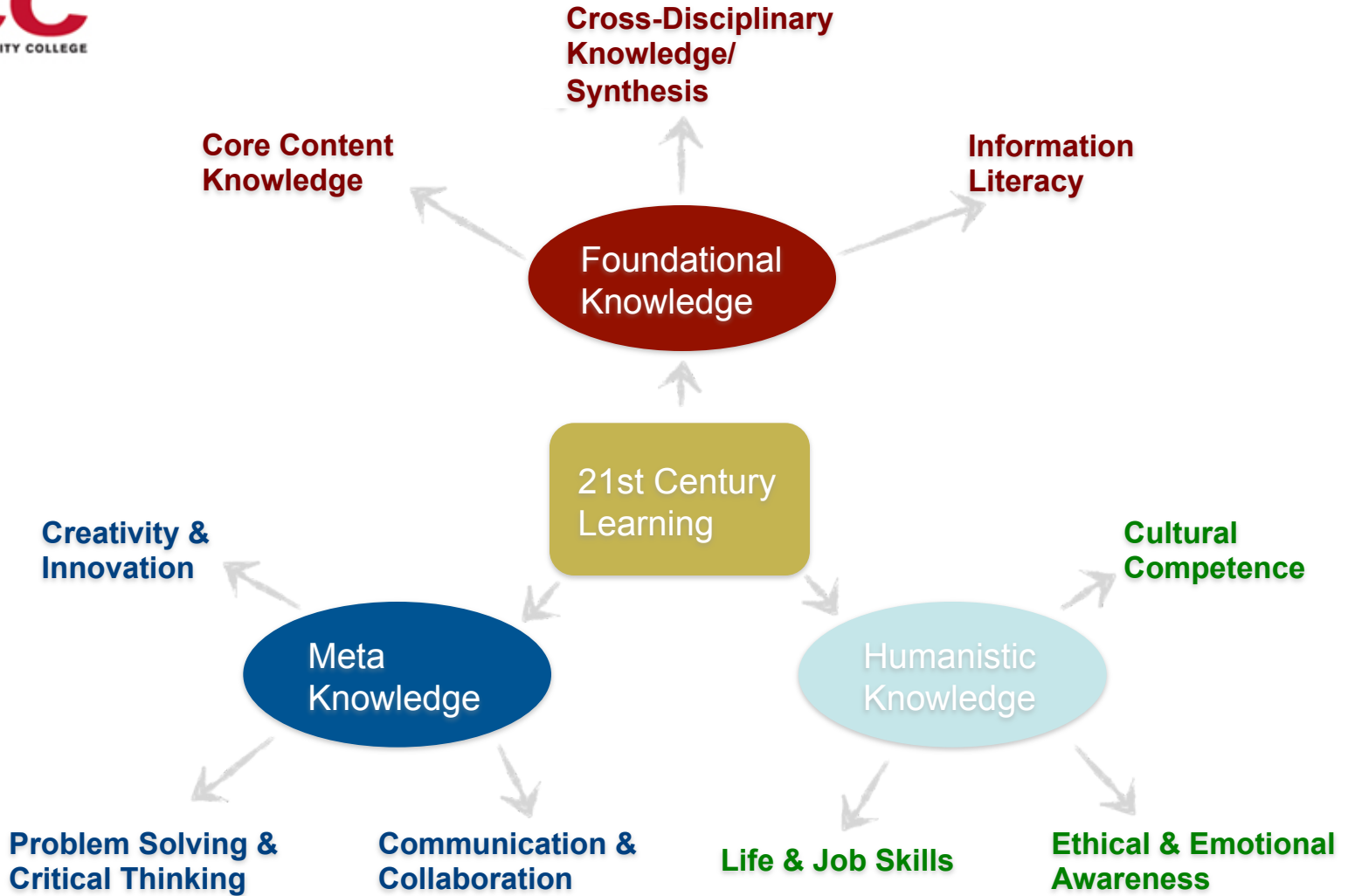
- Common Core Standards
 - What are they and how are they different?
 - K-12 District Plan for Implementation
 - Intersegmental Alignment with Community College
- Career & Educational Planning for ALL students
 - GFSF provides an avenue through which to reach every student in a systematic way
 - Whole school and district initiative provides a common language and goal

#1 SB
CC
SANTA BARBARA CITY COLLEGE



Get Focused...Stay Focused!™ Partnerships







Why GFSF?

Benefits to all Stakeholders

- Students: Student-centered/whole person approach, self-identified goals which lead to informed choices and higher student engagement
- Parents: Engaged children, free/reduced cost for college courses, demystifying the college-going process
- Secondary school: Change in school climate/culture, reduced dropout/suspension rates, higher student engagement, informed students help chart their own course, school-wide access to students' 10-year Plans



Why GFSF?

Benefits to All Stakeholders

- Post-Secondary Institution: College/career informed students, reduced need for remediation, students entering with a declared major, students on track to completion/transfer
- Community: Partnerships with schools, students prepared for the workforce, contributing members of society



Data from Carpinteria High School

A-G UC/CSU Completion Rates

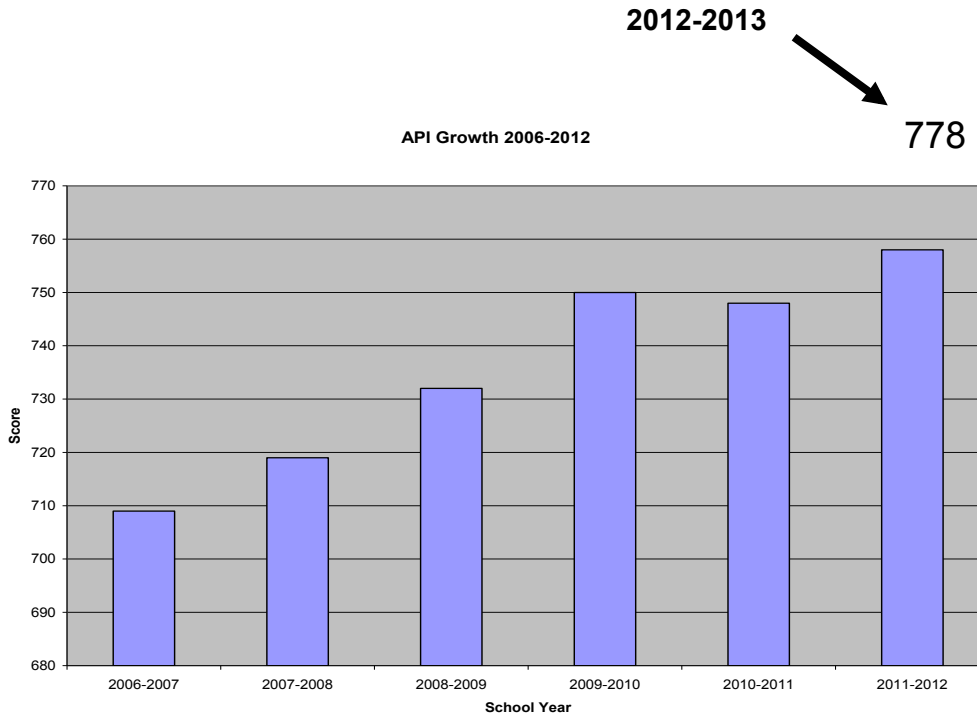
2005-2006	2006-2007	2007-2008	2008-2009	2009-2010	2010-2011	2011-2012	2012-2013 *
28.10%	23.30%	23.40%	35.60%	24.20%	33.60%	37.10%	47.60%

Get Stay Focused!™



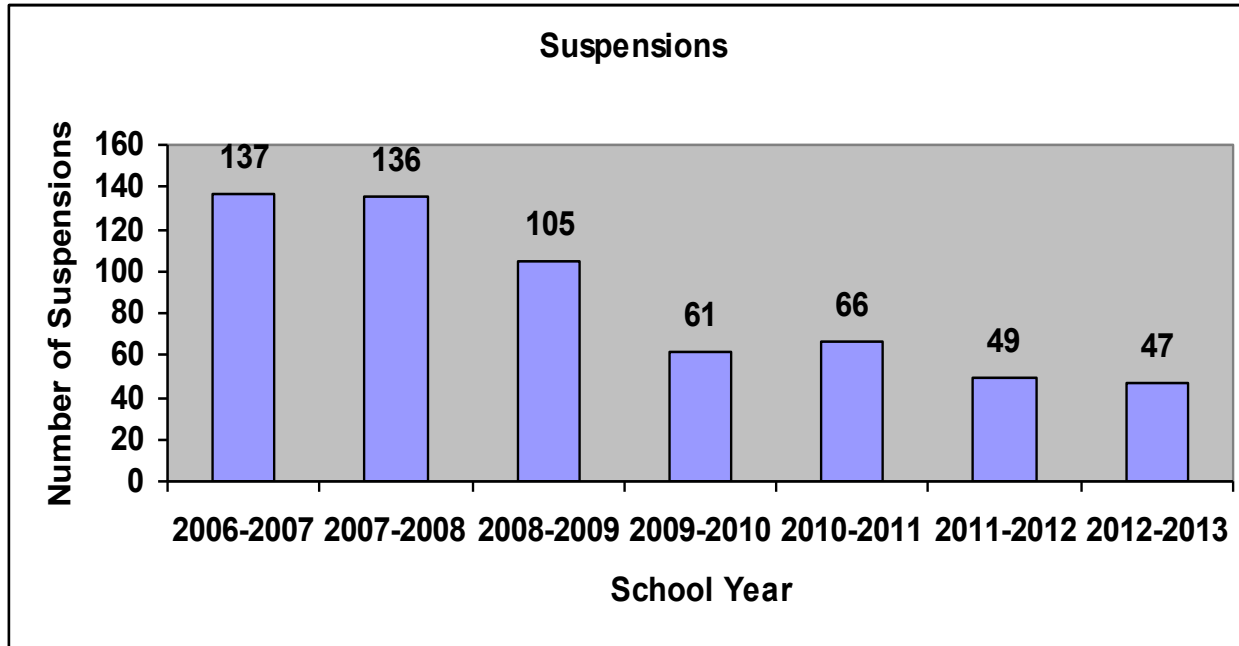
Data from Carpinteria High School

Academic Performance Index





Data from Carpinteria High School





Outcomes to Date:

- CHS Seniors:
 - In January 2013, 100 seniors (vast majority) indicated SBCC as a potential next step
 - 84 Followed through with Math and English Assessments (vs. 60 previous year)
- Looking forward:
 - GFSF Club – mentorship opportunity
 - 10-year Plan app and “alert” option
 - UCEC External Evaluation

#1 SB
CC
SANTA BARBARA CITY COLLEGE





Strategic Planning:

- Identify your Visionaries:
 - With whom with you collaborate?
 - What is the next step?
- Articulate your Goals:
 - What do you hope to accomplish?
 - How do your goals align with K-12?
 - How do your goals align with SB 1456?
- Gather Resources:
 - What professional development needs do you have?
 - What materials/information/resources do you want?
 - How can we help???



Input/recommendations?

Questions/Comments?

Thank you!

www.getfocusedstayfocused.org